

## INSTALLATION INSTRUCTIONS

**\*\*Installation recommendation:**

JBA recommends in most cases that the vehicle be taken to a reputable exhaust shop.

### 40-1510

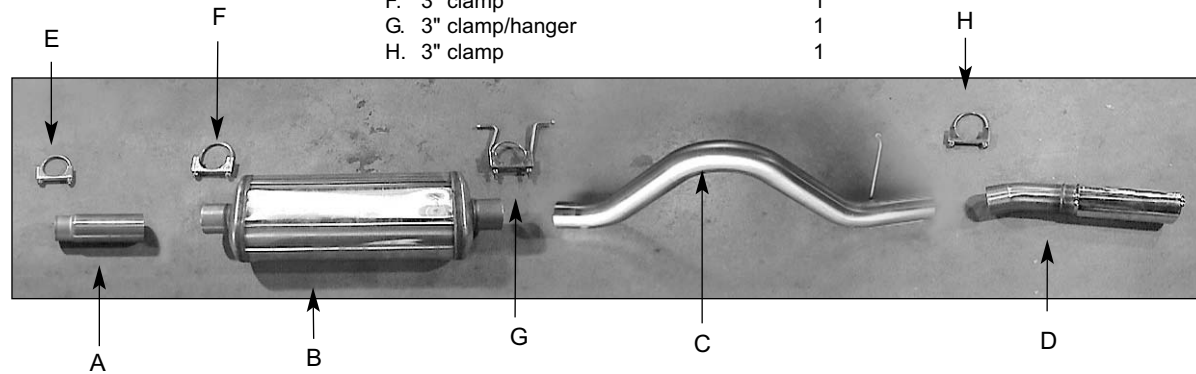
1998-2000 Dodge Durango  
V8-5.2L, 5.9L

#### TOOLS RECOMMENDED:

9/16 deep socket  
3/8" ratchet  
rubber mallet  
spray lubricant or penetrating oil  
anti-seize  
reciprocating saw or hack saw  
pair of channel lock pliers, 10"

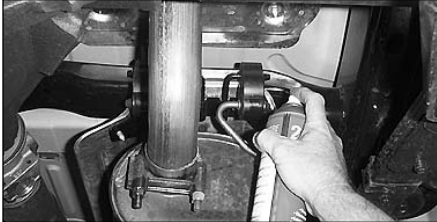
#### Parts List

A. Head pipe	1
B. Muffler, oval	1
C. Tail pipe	1
D. Turn out	1
E. 2-1/2" clamp	1
F. 3" clamp	1
G. 3" clamp/hanger	1
H. 3" clamp	1



#### TO START:

1. Remove and inventory new JBA exhaust.
2. Disconnect negative battery cable and allow vehicle exhaust to cool.



3. With vehicle raised and properly supported, spray lubricant on the two rear muffler hanger rubber grommet's lower hole.



4. Spray lubricant on rear tail pipe hanger rubber grommet's lower hole.



5. Using a pair of channel lock pliers, remove rear tail pipe hanger from lower hole in rubber grommet.



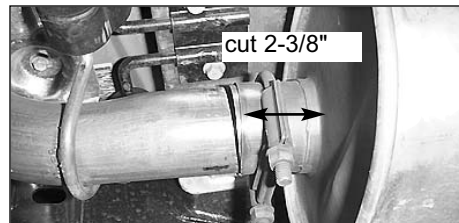
6. Using a reciprocating saw or hacksaw, cut tail pipe approximately 3" behind rear of muffler.



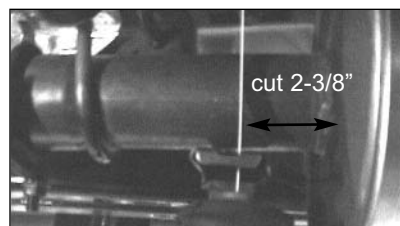
7. Remove tail pipe from rear of vehicle.



8. Using a pair of channel lock pliers, remove both rear muffler hangers from lower holes in rubber grommets.



1998-99 vehicle



2000 vehicle

9. With muffler properly supported, using a reciprocating saw or hacksaw, cut muffler off 2-3/8" away from muffler face.

10. Remove muffler.



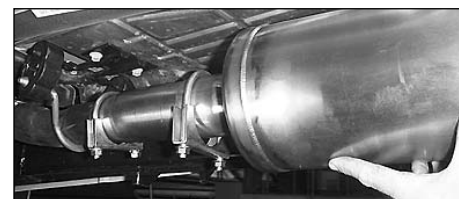
11. Install head pipe (A) over stock exhaust. Slip on to about 1-1/2".



12. Put some anti-seize on threads of the 2-1/2" clamp (E) and install on front of head pipe. With 9/16" deep socket, tighten completely.



13. Install rear muffler clamp/hanger (G) thru the lower holes in rubber grommets. The two bend rod should go to the passenger side.



14. With JBA logo facing rear of vehicle, install muffler (B) over head pipe (A) making sure muffler bottoms out on slip joint.



15. Put some anti-seize on threads of 3" clamp (F) and install on front of muffler slip joint with a 9/16" deep wall socket. Tighten completely.

16. Put some anti-seize on threads of clamp/hanger (G) and install over end of muffler. Hand tighten nuts at this time.

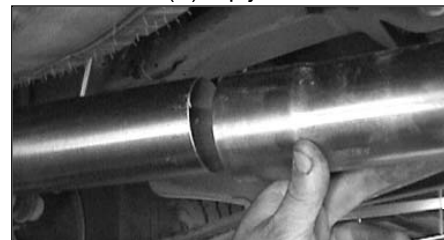
17. Install tail pipe (C) hanger towards rear of vehicle from rear of vehicle and slip into muffler (B).



18. Slip rear tail pipe hanger into rubber grommet.

19. Position tail pipe (C) so hanger is not cocked at an angle.

20. Tighten clamp/hanger (G) completely making sure tail pipe (C) is bottomed out on muffler (B) slip joint.



21. Install turnout (D) over tail pipe (C).



22. Put some anti-seize on threads of 3" clamp (H) and install over slip joint.



23. Tighten until snug using a 9/16" deep wall socket.



24. Rotate turnout to desire position making sure you check clearance on body. Tighten clamp (H) completely.

25. After installation, it is recommended that all clamps be retightened.

26. Tack weld all slip connections in three spot s.

27. Using a soft cloth, remove all prints from turnout tip (D).

28. Lower vehicle and reattach the negative battery cable.

#### NOTES:

1) It may be necessary to loosen and realign the spare tire for proper clearance.

2) All exhaust systems will expand about 1" rearward when exhaust temperature start to rise.

3) Use Anti-seize on threads of clamps.